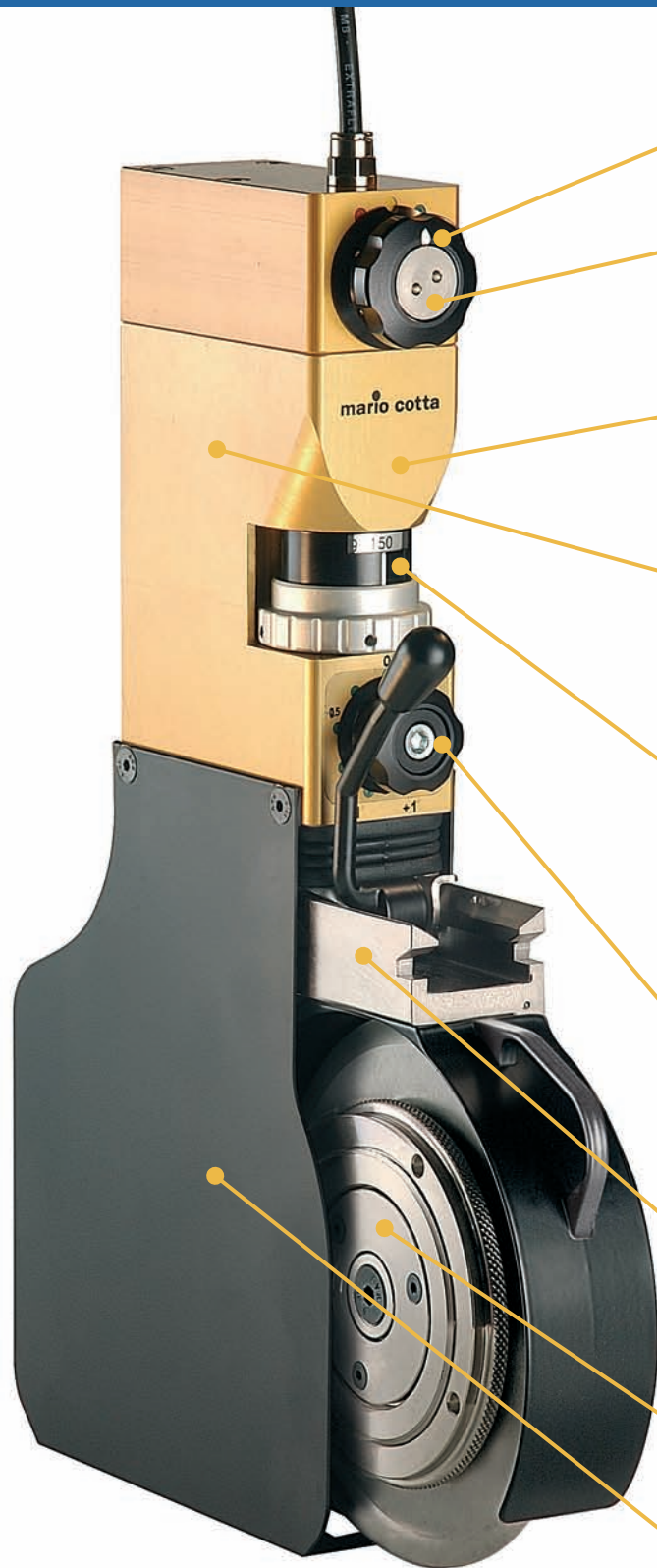


Shear Performance

Call 800-792-9302
www.mariocotta-usa.com



● Precise Setup Function Control Knob:
Visual controls of pneumatic functions.

● Blade-Stroke Setup:
Constant side pressure between
top blade and bottom anvil.

● Precision Bearings:
Robust guide rods for reliable
slitting stability, to ensure "SNS"
spatial nip-point stability.

● Air Circuit:
No internal hoses.
Dust proof design.
Reduces maintenance while
increasing trouble-free life.

● Calibrated Depth Knob:
For precise blade-anvil overlap.
Simply dial in the diameter of the
new or reground blade.
Reduces operator error and guarantees
accurate and reliable overlap.

● Quick Change Cant Angle Adjustment:
Set correct cant angle when changing
knife holder direction.

● 180°xReversible Blade Cartridge:
Use the SAME blade cartridge for
cutting on both sides of the anvil blade.

● Removable Blade Cartridge:
Safe off machine blade changes.

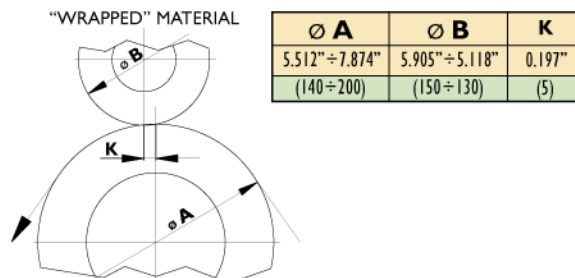
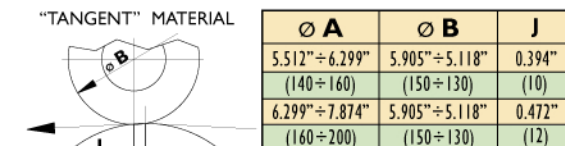
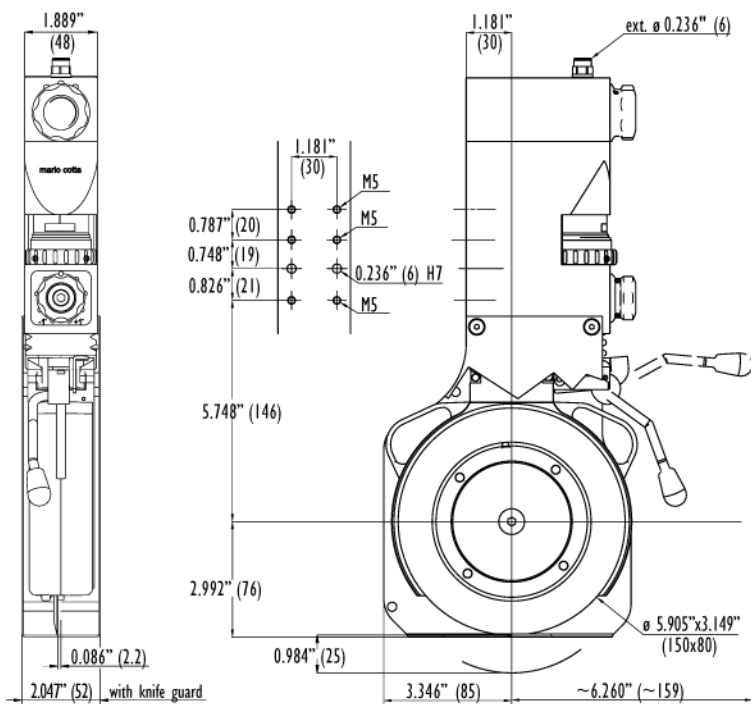
● Optional 360°xBlade Guard-Shroud:
Complete integral guard for
hazardous operations.

Gold Series Knifemaker Model 45 145 -B
Maximum slitting speed: 5000 FPM
Minimum slitting width: 2 Inches

SPECIFICATIONS AND DIMENSIONS

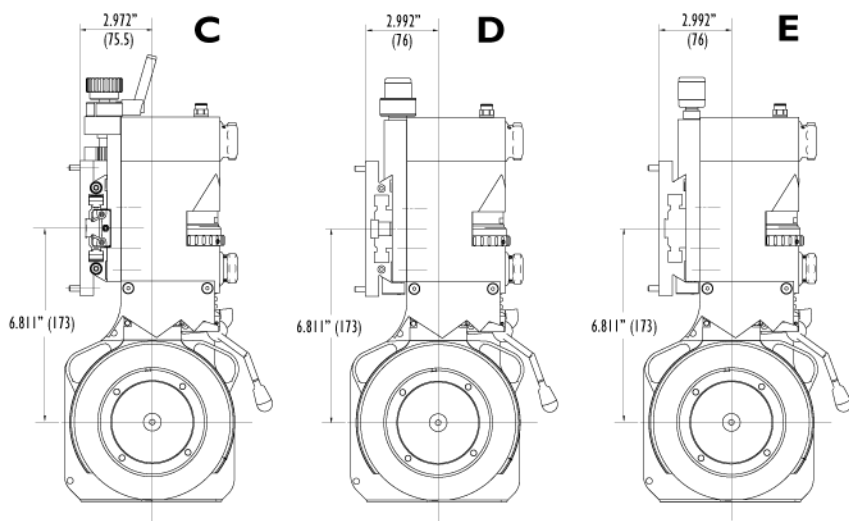
Class	Materials	Minimum slit	External blade diameter	Maximum slitting speed	Maximum material weight	Force at 58 psi (4 bar)	Recommended air pressure	Maximum vertical stroke
Converting	Paper, coated papers, fine printing papers, foils, paperboard, chrome-coated, poly-coated, all films, non-wovens	2.047"/1.968"* (52/50* mm) * without the knife guard	5.905" (150 mm)	4921 ft/1' (1500 m/1')	0.143 lb/ft ² (700 g/m ²)	Vertical 30.9 lb (14 kg) Horizontal 6.2 lb (2.8 kg)	58÷80 psi (4÷5.5 bar)	0.984" (25 mm)

Note: Slitting speed is inversely proportional to material weight. It further depends upon the technical characteristics of the product to be cut.



Remark for installation:

For a correct shear cut **mario cotta** suggests to respect the distance **J** or **K** between the top knife axis and the bottom knife axis according to the drawings.



BRACKETS AND RAILS (optional)

C Knifeholder assembled on bracket with linear bearings carriage, pinion for displacement on rack and locking hand grip, code **45 880 CA GOL D**, mounted on linear rail with double pneumatic brake and rack, code **45 910 CA 100 0**.

D Knifeholder assembled on bracket with pinion for displacement on linear rack and locking knob, code **45 880 ZA GOL D**, mounted on dovetail linear rail with rack, code **45 910 ZA 100 0**.

E Knifeholder assembled on bracket with locking knob, code **45 880 MB GOL D**, mounted on dovetail linear rail, code **45 910 MA 100 0**.